

REVOLUTIONARY  
**LUMAIRE**  
LIGHT PANEL



Made in EU



# LUMAIRE

## \_INTRODUCTION

### ABOUT LUMAIRE

LUMAIRE has been manufactured with the end user and customers in mind. It is not a product that has been designed first without a thought for applications or customers requirements.

LUMAIRE is meant to display graphics, prints and posters and they will come alive when they are laid on a standard opal acrylic sheet. The technology behind LUMAIRE benefits from having a display sheet of acrylic placed onto it. It actually **ENHANCES** the light emittance and renders the light output nearly double that of competing LED light panels.

LUMAIRE allows you to use less raw materials, create slimmer and more elegant designs and reduce weight, which in turn saves time for labour when installing.

The new magnetic-system surround makes displaying posters or colourful eye catching designs a breeze and changing them on a regular basis extremely straight forward.

Slim, attractive, low powered displays in standard and custom sizes are no longer a dream of the future, but an evolution of the present and available right now.

Like no other product before it, LUMAIRE really has to be seen to be believed..

**\_EXTREME BRIGHTNESS** (7000 lx)

**\_CRISP COLOR RENDERING**

**\_HIGHLY CUSTOMIZABLE**

**\_HIGHLY VERSATILE**

**\_EXTREMELY SLIM** (15 mm)



# LUMAIRE

## \_GENERAL INFORMATION

### FEATURES

**\_Exceptionally slim.** Magnetic light panel is only 15 mm thick.

**\_Extremely bright.** Up to 7000 lx on the light panel's surface depending on the size.

**\_Highly customizable.** Every possible variation of light panel size up to 2450 x 1250 mm overall dimensions with either one-sided or double-sided lighting, bent or flat acrylic sheet.

**\_Low power consumption.** Maximum size light panel (2450 x 1250 mm) with double-sided lighting and ~5000 lx on the surface consumes only 100Watts.

**\_Versatile.** A great number of different possible applications of the light panel, starting with signage and ending with interior lighting solutions.

### APPLICATIONS

- \_ Retail lighting
- \_ POS display lighting
- \_ Shelving lighting
- \_ Interior design lighting
- \_ Product display lighting
- \_ Ceiling lighting
- \_ Wall panel lighting
- \_ Exhibition lighting
- \_ Graphic display
- \_ Bus shelter displays
- \_ Flex face light boxes
- \_ Fluorescent T8 tubes replacement
- \_ Museum display lighting

### STRUCTURE

#### \_PRINT

Final step of the light panel is to choose, design and manufacture the desirable print you want to light up. Every standard back-lit and rigid print works perfectly with LEDDEX light panel.

#### \_ACRYLIC SHEET

The most important part of the light panel. Acrylic sheet designed for even light distribution on the entire surface of the product, leaving no room for hot spots or darker areas you want to light up.

#### \_REFLECTOR

A flexible material designed for supreme light reflection and color enhancement, making the most of LED lighting and acrylic sheet.

#### \_LED STRIPS

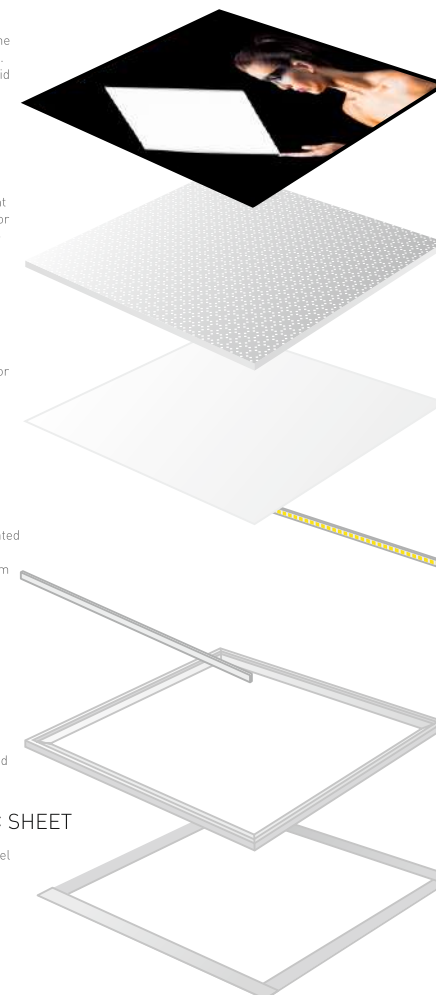
High power LED strips with integrated Intelligent Control (IC) system for ultimate reliability and maximum lighting effect.

#### \_MAGNETIC FRAME

To deal with the heat LED bar is generating, high cooling efficiency aluminum frame are used to cool down the LED bar and to ensure optimal operating temperatures and long life span of the product.

#### \_PROTECTIVE ACRYLIC SHEET

For your convenience, light panel with a protective acrylic sheet, which ensures easy print change in just several minutes.



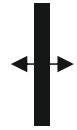
### SPECIFICATIONS

Components	acrylic sheet, white reflector, frame, LED strip, protective acrylic sheet, magnets, brackets, power supply
Lighting	3000K/4000K/6500K or other colour temperatures by SAMSUNG
Cooling	aluminum frame with a direct contact with the LED strip
Protective acrylic sheet	Protective acrylic sheet is based on metal strips.
Other	double adhesive tape is attached to the LED strip

# LUMAIRE

## \_ VARIATIONS AND FORMATS

### VARIATIONS



Double sided



Curved



Custom shaped



### FORMATS\*

	EXTERNAL SIZE	POSTER SIZE	VISUAL SIZE	POWER
1.	1217x873	A0 1189x841	1163x819	53 W
2.	869x626	A1 841x594	815x572	37 W
3.	622x452	A2 594x420	568x398	27 W
4.	448x329	A3 420x297	394x275	19 W
5.	325x242	A4 297x210	271x188	7 W
6.	700x500	672x468	646x446	30 W
7.	2478x1282	2450x1250	2424x1228	107 W

\* Please note that we offer light panels of any dimensions, these sizes are just for common understanding



# LUMAIRE

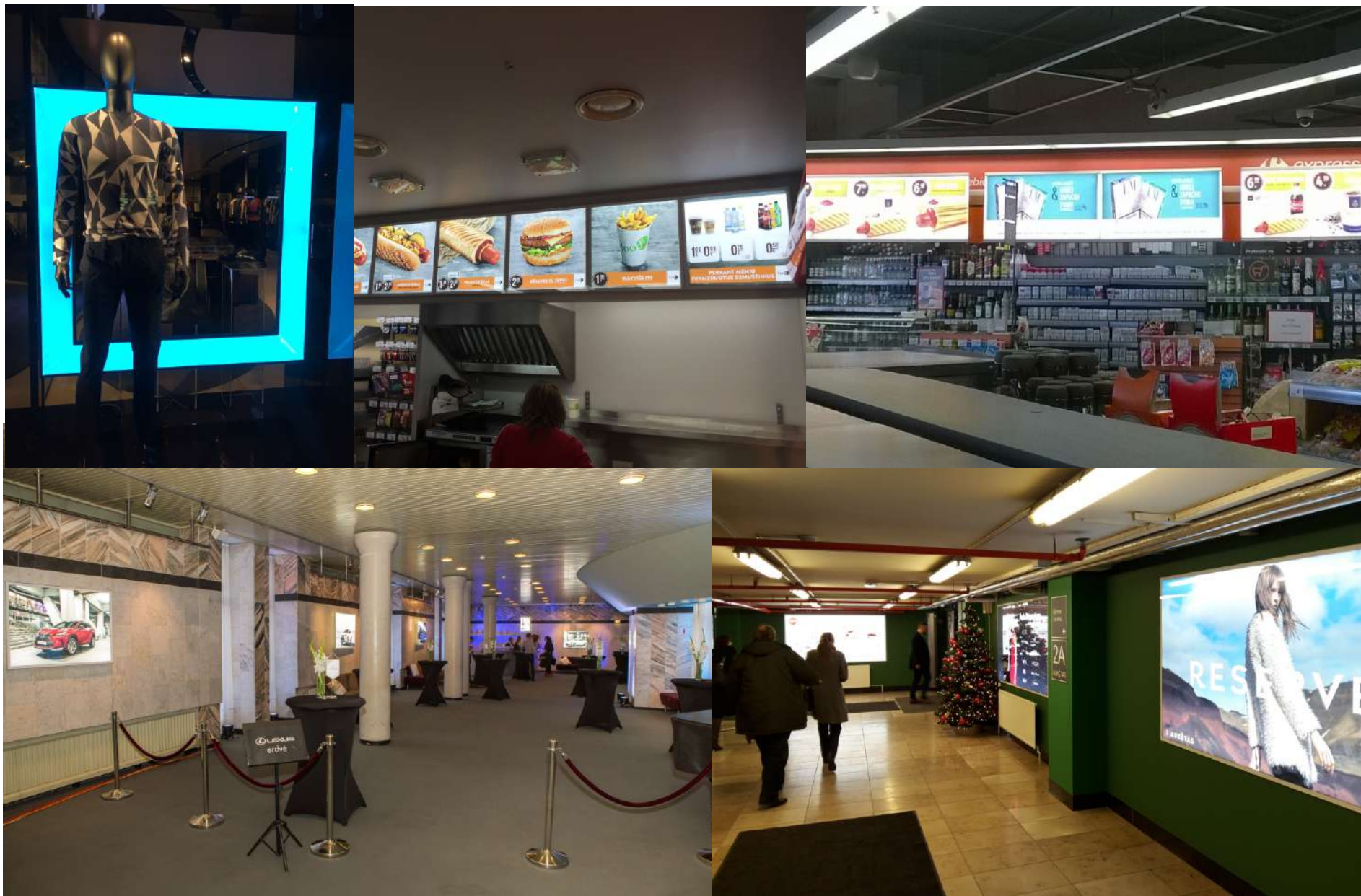
\_PRODUCT IN USE





# LUMAIRE

\_PRODUCT IN USE





# LUMAIRE

\_PRODUCT IN USE



For more information about  
LUMAIRE Light panel, possibilities  
and pricing, please contact us at:

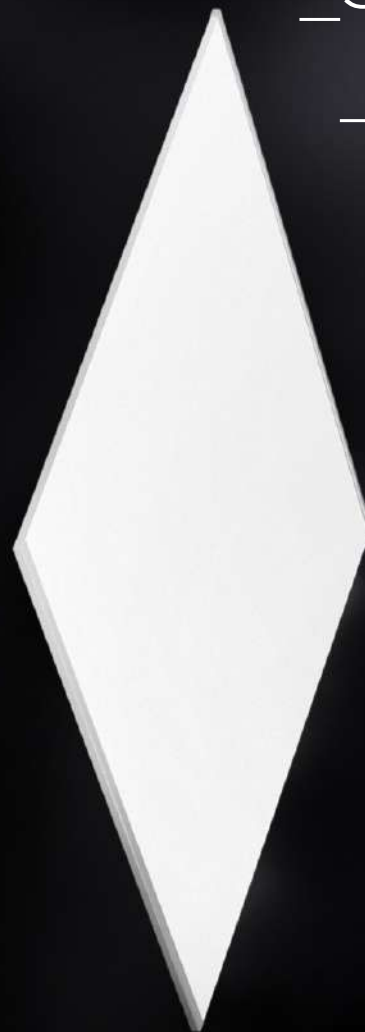


**PSDESIGN Kft.**

H-1165 Budapest, Nyíltuska u. 3

tel: +36-1-253-0351

fax: +36-1-253-0352.



\_SLIM.  
\_BRIGHT.  
\_VERSATILE.  
\_LUMAIRE.